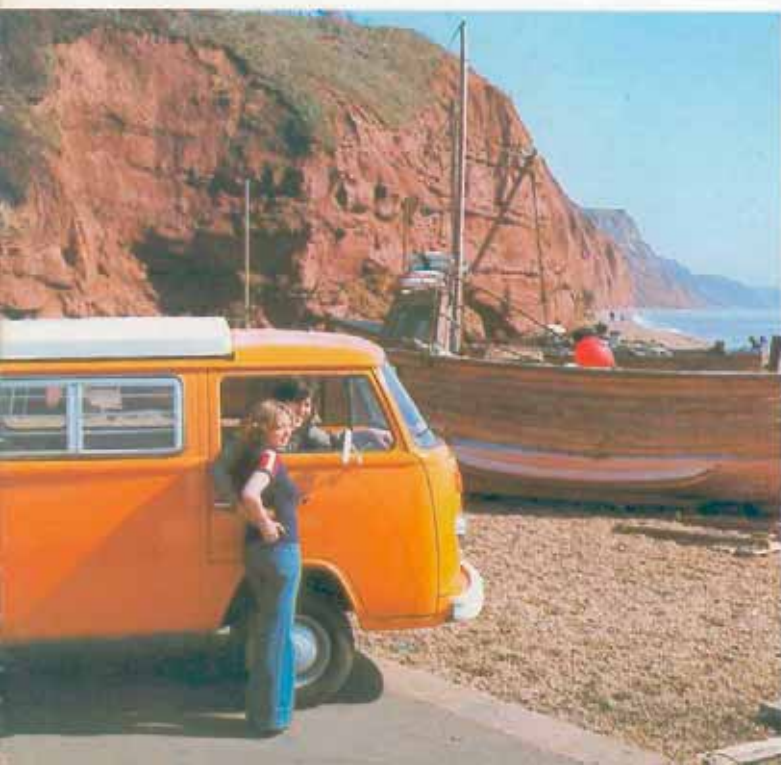




Not so much a vehicle...





...more a

You'll wonder how you ever managed without a VW Devon Motor Caravan.

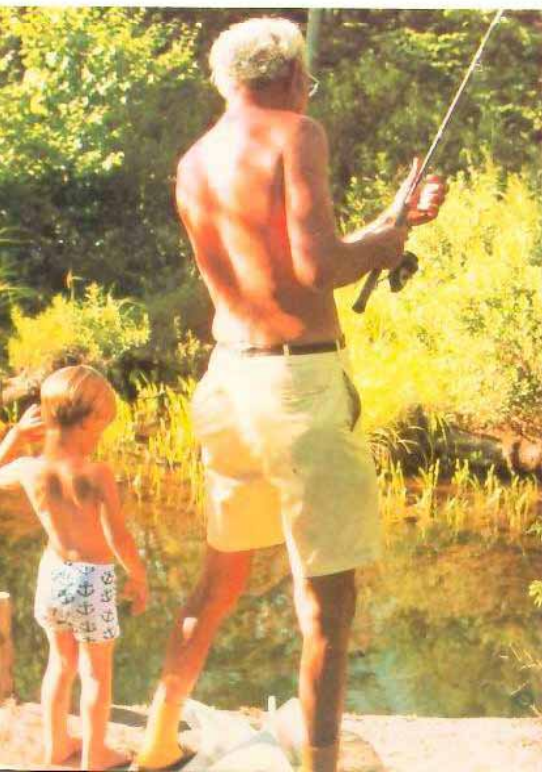
Your holiday home, saloon car, spare room, estate car, delivery van, minibus and much, much more.

VW Devon motor caravans open

up so many possibilities. Save you money in so many ways.

And now, there's a beautiful new range of VW Devons with dozens of improvements.

Like the comfortable bed, more cupboard space and water storage,





way of life.

luxury trim and louvre window.

VW is more a way of life too. Quality and reliability backed up by a world-

wide dealer service network, to give you great value for money and keep your VW Devon in perfect condition.

 **Devon Motor Caravans**





 **Devon**

MOONRAKER

The Moonraker is a brand new motor caravan built on the famous VW Kombi.

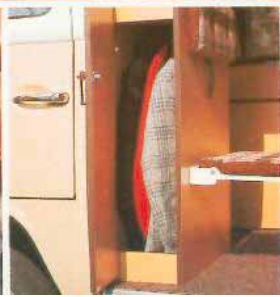
There's dozens of refinements on board to make you feel at home wherever you are.

Lots of storage space, large cool

box (optional fridge), cooker, grill, underfloor water storage, carpet and deluxe cab trim to name but a few.

And if you can drive a car—you can drive a VW Devon.

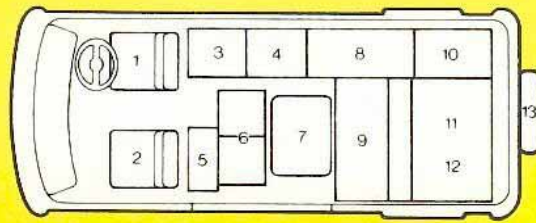
It handles and parks just like a family saloon.





BY DAY

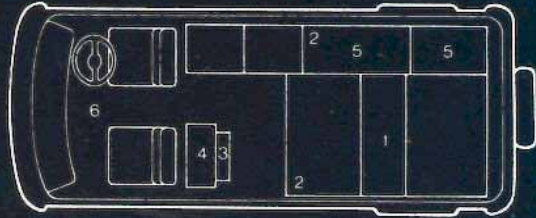
- 1 Driver's seat.
- 2 Passenger's seat.
- 3 Sink. Cool box under (refrigerator option).
- 4 Cooker.
- 5 Wardrobe.
- 6 Seat with single additional seat for dining.
- 7 Table.



- 8 Storage locker.
- 9 2/3 seater bench seat.
- 10 Storage.
- 11 Engine Deck Cushion.
- 12 Roof locker (over).
- 13 Spare wheel.

BY NIGHT

- 1 Double bed.
- 2 Two single fold-away bunks with elevating roof. (Optional extra.)
- 3 Single seat.
- 4 Wardrobe.
- 5 Storage.
- 6 Child's cab hammock bunk (optional extra).



Getting down to details...

VW Devon Moonraker built on the VW Kombi with deluxe cab trim including brushed nylon seats with head restraints.

Interior trim and floor

Rich carpet trim covers all interior panels up to window level.

A removable toning brown carpet overlays an attractive brown and cream patterned vinyl floor with polystyrene insulation underneath.

Seating

There is a 2/3 seater rear bench seat, with ample storage space beneath.

A single rear facing upright seat is fixed to the face of the wardrobe. An additional single seat is provided, so that it can be easily converted to a double bench seat for dining.

Bed

The rear bench seat pulls out

easily to form a large double bed. The rear seat and engine deck cushions provide a deep foam mattress.

Kitchen and storage units

A complete kitchen and storage unit is fitted along the offside of the vehicle. This includes stainless steel sink and drainer with faucet, electric water pump, and double burner cooker with grill and built-in splash guard.

Beneath the sink is a large cool box (optional fridge). Below the cooker are two pull out drawers, one for cutlery, and a roomy double cupboard.

To the right of the cooker is a large storage locker with a hinged flap top, with gas bottle storage cupboard beneath, vented to the outside.

On the offside of the engine deck is a useful upright storage cupboard

with 3 cubbyhole shelves at the back, and above, a roof locker with a hinged front.

Behind the passenger's seat is an upright hanging wardrobe with access doors on both sides.

Table

Table is stored under the roof locker and when in use is fixed on a single column leg in the centre of the floor area.

There is an interior fluorescent light.

Water Storage

A 7 gallon capacity underfloor water tank is fitted.

Spare Wheel

The spare wheel is on a mounting bracket fitted to a hinged cradle and fixed externally above the rear bumper, and protected by a fitted vinyl cover.

Cushions and Curtains

Attractive buttoned deep foam cushions in a brown and beige check material with printed floral pattern curtains running on a continuous curtain track.

Windows

Four large windows in passenger area and the offside front has a double louvre for fresh air ventilation.

The Devon Moonraker is available with or without the Devon Elevating Roof.

Non Elevating Roof Models

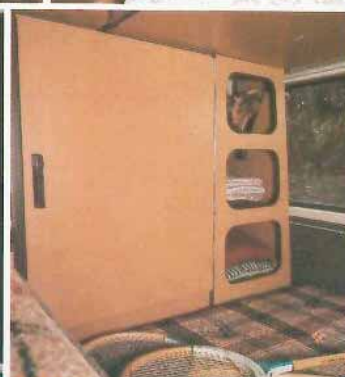
Roof headlining finished in carpet trim.

Elevating Roof Models

See back page.

Optional extras include

Refrigerator (12 volt and Gas). Side step. Cab hammock bunk.





 **Devon**

SUNDOWNER

A new motor caravan from Devon – the true multi-purpose vehicle. Drives and parks like a car, and seats up to eight people.

Carries masses of goods, doubles as a spare room, to put up extra guests.

Takes you and the family on holiday.

And a multitude of other uses Devon owners are always adding to.

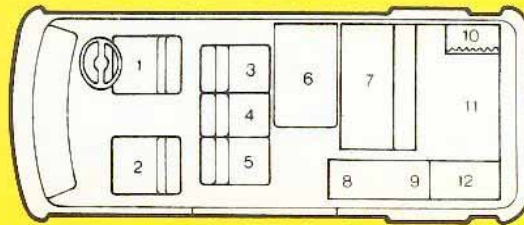
Why not find out how the versatile Sundowner can help you keep down the cost of living?





BY DAY

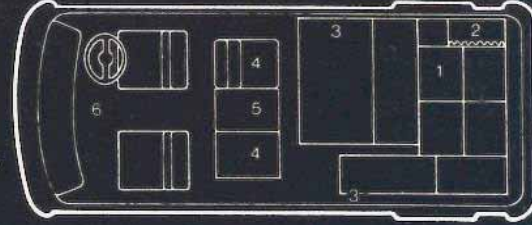
- 1 Driver's seat.
- 2 Passenger's seat.
- 3 Seat box with reversible backrests. Seats slide fore and aft.
- 4 Removable single seat to form 3 seater bench seat.
- 5 Seat box with reversible backrests. Seats slide fore and aft.



- 6 Table.
- 7 2/3 seater bench seat.
- 8 Cooker.
- 9 Cupboard.
- 10 Wardrobe.
- 11 Roof locker (over).
- 12 Spare wheel.

BY NIGHT

- 1 Double bed.
- 2 Wardrobe
- 3 Devon elevating roof with 2 full length bunks (optional extra).
- 4 Single seat box with storage under.
- 5 Removable single seat.
- 6 Child's cab hammock bunk (optional extra).



Getting down to details...

The VW Devon Sundowner is built on the VW Type 2 van.

Interior trim and floor

All side trim panels are covered in textured vinyl. An attractive brown and cream patterned vinyl floor is underlaid with polystyrene insulation.

Windows

Four large windows in the passenger compartment, and the offside front has a double louvre for fresh air ventilation.

Seating

There is a 2/3 seat rear bench seat, with ample storage beneath. In front of this are 2 single sliding removable seat boxes. The seat backrests are

reversible to enable the seats to face front or rear.

There is a removable single seat to form a 3 seater bench seat.

Bed

The rear bench seat pulls out easily to form a large double bed. The rear bench seat and single seat cushions are used to make up a deep foam mattress.

Storage space and cooking facilities

On the offside of the engine deck is a hanging wardrobe with curtained front and above is an open fronted roof locker.

Behind the sliding door on the nearside is a storage/cooking unit

containing a removable two-ring cooker and grill complete with a folding stainless steel heat shield. The storage unit has an opening front door and contains a washing up bowl and a 2 gallon water carrier.

Seat Cushions and Curtains

Attractive deep foam cushions in brown/beige check material with vinyl backs. Curtains are floral printed, running on a continuous curtain track.

Table

For dining there is a chocolate coloured table with a single leg which locates in an adjustable fixing strip on the offside trim panel.

Spare Wheel

The spare wheel is covered in a matching brown vinyl material.

The Devon Sundowner is available with or without the Devon elevating roof.

Non Elevating Roof Models

Roof headlining finished in vinyl trim. An interior fluorescent light is fitted.

Elevating Roof Models

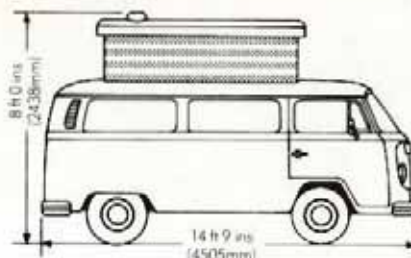
See back page.

Optional extras include

Side step. Cab hammock bunk. Matching cab seat covers.



Exterior dimensions



Technical details

NB Spare wheel carrier on VW Devon Moonraker extends vehicle length by 6 ins (150mm).

Base Vehicle

Moonraker VW Type 2 Kombi.
Sundowner VW Type 2 Van.

Exterior colours

Moonraker: Pastel white, Marino Yellow/White, Taiga Green/White, Dakota Beige/White.
Sundowner: Pastel White, Marino Yellow, Taiga Green.

Engine

1600cc 4 cylinder air cooled.

Engine options

2000cc (includes brake servo and radial ply tyres).
2000cc Automatic.

Bore	1600cc	2000cc
Stroke	85.5mm	94.0mm
Cubic capacity	69.0mm	71.0mm
Compression ratio	1584cc	1970cc
Output - kW	7.5:1	7.3:1
- DIN	37kW	51kW
- SAE	50 bhp	70 bhp
net	48 bhp	67 bhp
At 4000/min	4200/min	
Max. torque		
- Nm	108 Nm	143 Nm
- DIN	10.8 mkg	14.3 mkg
- SAE	74.5 lb ft	98.6 lb ft
At 2800/min	2800/min	
Fuel Rating (RON)	91	91
Filling capacities		
Fuel tank	13.2 gals imperial	
	(including 1.1 gal reserve).	

Engine 4.4/6.2 pints (1600cc/2000cc) (including filter).
Gearbox/Final Drive Manual 6.2 pints
Automatic see handbook

Suspension

Independent all round with torsion bars.
Front: Twin cranked trailing arms.
Rear: Semi trailing arms.

Steering

Worm and roller with hydraulic damper.
Number of turns, lock to lock 2.8.
Turning circle, kerb to kerb 37.2 ft (11.34m).
Turning circle, wall to wall 40.4 ft (12.31m).

Electrical system

Voltage 12 volts

Earth Negative
Battery 45 amp/hr
Alternator 50 amp/700W (1600cc)
55 amp/770W (2000cc)

Braking system

Type front: Disc. Dual circuit system with brake pressure regulator.
Type rear: Drum on rear wheels.
Handbrake Mechanical on rear wheels.
Size front 10.94 ins.
Size rear 9.92 ins.

Note: 9 in diameter servo fitted as standard on 2000cc model.

Wheels and tyres

1600cc 7.00 x 14 8 PR
2000cc 185R 14C radial
Wheel 5½J x 14

Devon Elevating Roof

Designed and produced by Devon Conversions. The roof is made in a one piece fibreglass top with polystyrene insulation and a vinyl covered interior headlining (carpet headlining on Moonraker).

An interior fluorescent light is fitted centrally into the roof headlining. Two ventilators are fitted at the rear for air extraction.

Elevation and lowering are assisted by spring loaded metal tubing fixed to a double metal frame. Rigidity supports and safety catches are included. The roof skirt is a striped vinyl cloth, toning with the exterior vehicle colours.

Fitted alongside the roof aperture are two full length bunks which fold away neatly when not in use.



Devon Drive-Away Tent

The ideal optional extra from Devon. Fixes easily on to your vehicle with a clip on double plastic channel and two elastic cords.

Drive away, and you leave a completely enclosed, self-supporting tent on a tubular frame, which will keep your site reserved for you.

There are two side windows with curtains to give you complete privacy. The front wall can be raised to form a sun canopy or rolled up and held by tie tapes.

The floor area is approximately 10 ft x 6 ft 6 ins (65 sq ft). Mudwalls are easy-clean plastic over a strong synthetic frame. All the zips are of high-quality polyester on white proofed tape.

The Devon Drive-Away Tent includes curtains, guylines and pegs. Plus a bag for the canvas section and one for the framework.

A groundsheet is also available.
All quality made by S. T. Harrison of Bristol.



Devon Motor Caravans

Devon Conversions Ltd, Alexandria Works,
Sidmouth, Devon EX10 9HA.

Telephone (03955) 2345. Telex 42624.



Member of the Renwick Group.

See your VW Devon dealer at:

Trade Descriptions Act 1968. The policy of Devon Conversions Ltd is one of continuous development, and they reserve the right to change specifications and prices without notice.